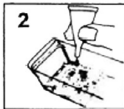
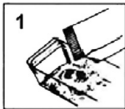


## Directions For Using DENTEMP® CUSTOM Temporary Filling Mix

Read directions completely and carefully before starting. Follow directions step by step as you proceed.

### TO RE-CEMENT A CAP OR CROWN:

1. Wash hands and dry thoroughly.
2. Open packet carefully and pour ALL THE POWDER into the clear plastic tray (Diagram 1). Using the wooden spatula form the powder into a small pile.



3. **TO OPEN TUBE:** Push down on cap hard until it clicks. This will puncture a hole in the tube. Remove cap and squeeze all of the liquid from the tube onto the pile of powder (Diagram 2).

4. Use the wooden spatula to thoroughly mix contents together until a smooth creamy consistency is achieved.

5. When mixture is ready, carefully rinse tooth area and inside of crown with water and dry thoroughly with cotton.

6. Using the wooden spatula, place a small amount of mixture along the upper inside of the wall of the crown (Diagram 3).

7. Place crown on tooth and press firmly for several minutes.

8. Bite down several times to insure proper bite.

9. Remove any excess material. Rinse out mouth well with water.

10. Allow 60 minutes to set before eating.

11. This product is for temporary use only. Consult your dentist as soon as possible.



**Note 1:** When replacing a bridge apply Dentemp sparingly to only one hollow tooth at each end of the bridge. Dentemp should not be used on implants.

**Note 2:** A variation in the color of the liquid in the tube from one tube to another does not affect the way the product will work.

Any problems or questions?

Call us at (800) 238-0220 or (845) 436-0011, M - TH, 8:00 AM to 4:00 PM E.T., Friday 8:00 AM to 3:00 PM E.T., E-Mail us at: [custserv@majesticdrug.com](mailto:custserv@majesticdrug.com), or visit our website at [www.dentemp.com](http://www.dentemp.com).

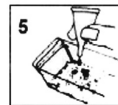
**INGREDIENTS:** Packet contains Zinc Oxide - 2 GM. Tube contains Eugenol - 1 ML.

**KEEP OUT OF THE REACH OF CHILDREN**

**CAUTION:** Do not use if you are allergic to Eugenol. If burning sensation occurs, remove Dentemp materials from mouth and rinse affected areas with vegetable oil. This product should not be used if throbbing pain or swelling in affected area exists. Consult your dentist immediately. This product is sold only as a temporary remedy. You must see your dentist as soon as possible for permanent work to be performed. Failure to do so may cause infections and/or serious injury.

### TO REPLACE A LOST FILLING:

1. Wash hands and dry thoroughly.
2. Open packet carefully and pour ALL THE POWDER into the clear plastic tray (Diagram 4). Using the wooden spatula form the powder into a small pile.



3. **TO OPEN TUBE:** Push down on cap hard until it clicks. This will puncture a hole in the tube. Remove cap and squeeze about 1/2 of the liquid from the tube onto the pile of powder (Diagram 5).

4. Use the wooden spatula to thoroughly mix contents together until a putty-like consistency is achieved. If the mixture is too dry, add additional liquid from the tube, drop by drop, with mixing to obtain the proper consistency. **The mixture is at the proper consistency when it becomes only slightly tacky and you can easily roll it into a ball between your fingers without it sticking to your fingers.** If the mixture is at proper consistency, got to step 7. *If any liquid remains, place cap back on tube firmly and discard.*

**DO NOT SAVE.** Try to get all the powder into the mixture.

5. If the mixture becomes too loose, use wooden spatula to form material into a single mass and transfer it onto a clean paper towel or napkin.

6. Dry mixture by pressing FIRMLY between dry sections of paper towel or napkin (Diagram 6). This procedure may have to be repeated several times (possibly up to 10-12) times, each time using a dry section of towel or napkin. Remember, the mixture is at the proper consistency when it becomes only SLIGHTLY TACKY and you can easily roll it into a ball between your fingers without it sticking to your fingers. Do not over dry.



7. Repeat step 6 as necessary until the material reaches the proper consistency. Do not use Dentemp in your mouth until it is dry enough.

8. When mixture is ready, rinse out cavity area carefully with warm water.

9. Dry cavity area with cotton.

10. Form a small amount of mixture into a ball (Diagram 7).



11. Press ball firmly into cavity area (Diagram 8).

12. Bite down several times to insure proper bite.

13. Remove any excess material. Rinse out mouth well with water.

14. Allow 60 minutes to set before eating.

15. This product is for temporary use only. Consult your dentist as soon as possible.